



## **SPS10 ELECTRIC SETUP AND OPERATION**

### **ADJUST HANDLEBARS**

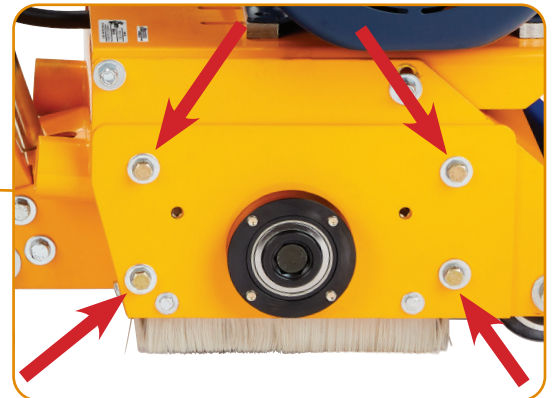
There are 4 x 9/16" bolts. Nearly every adjustable bolt on the machine is a 9/16".

We recommend the handle be moved to a 45° angle toward the machine. With the handle in that position, the operator can put their foot on the back of the machine to turn it.

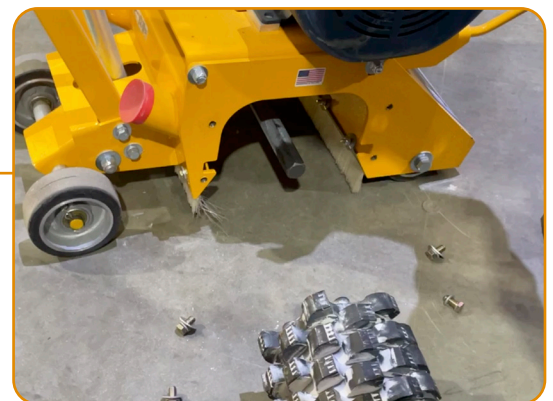


### **INSTALL DRUM**

Remove the four bolts holding the sideplate.



Remove sideplate and insert drum. When drum is installed, replace sideplate.



*PCDs, diamonds, and milling cutters are **DIRECTIONAL**; they can only go forward. Improper installation will result in severe damage to the cutters. The sideplate arrow indicates the direction.*

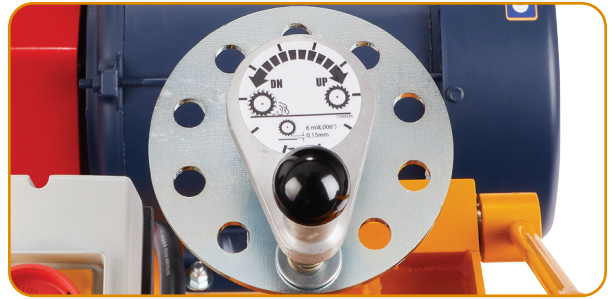


## **CHECK MACHINE BEFORE USE**

Each notch is .001" Recommended cut depths are between 1/8" and 3/16" per pass, depending on the hardness of the concrete. 1/8" is 12 notches on the dial.

Set depth by lowering the handle, dialing the drum down until the cutters touch the surface, then raise the handle and dial in your cut depth. When lowering the handle to cut, use care that the machine doesn't pull the operator forward. The operator **MUST** hang on to the machine.

Lower handle to begin cutting, and raise the handle to bring the drum off of the surface.



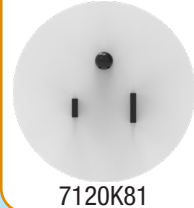
Machine requires a minimum 50A circuit and is 220 single-phase. If running on a generator, it must have **MINIMUM 11k CONTINUOUS** power, not 11k **MAXIMUM**. Low power could result in overheating and burning out the motor.

SPS10.E5.230.1



7162K53

SPS10.E7.230.1



7120K81

SPS10.E7.460.3



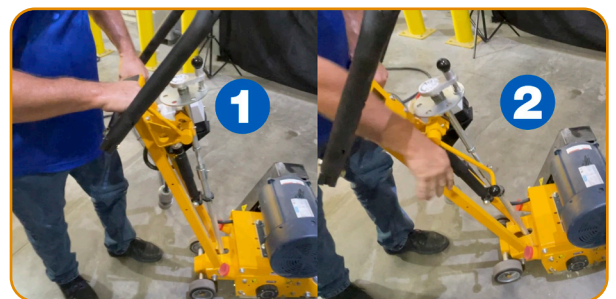
7164K49

SPS10.E7.230.3



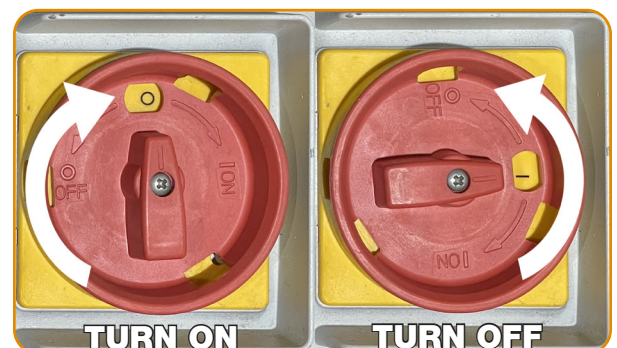
7164K58

Put handle in the DOWN position to make sure the drum is not touching the surface. If touching, adjust dial counterclockwise to raise drum. Then you can dial in the desired cut depth.



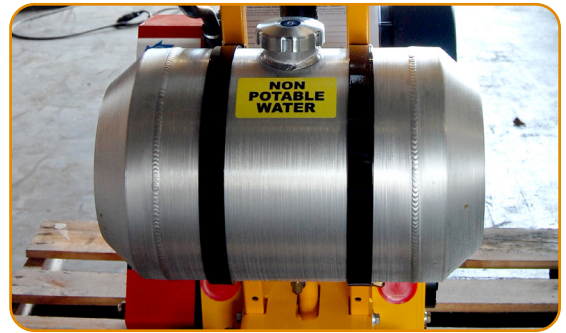
## **OPERATING THE MACHINE**

Turn switch to the ON position. The switch has a set of overloads built in which will turn the machine off if overloaded or pushed too hard. If this happens, let machine cool and then reset.



## **OPERATING THE MACHINE (cont'd)**

When running the machine with a water kit, be sure to rinse ALL concrete dust off the machine (including the underside) at the end of the day. Concrete dust turns into solid concrete when dried, and can result in premature bearing failure and other issues.



Bearings are sealed and should last hundreds of hours.

Grease points are on the rear wheels, the adjustment rod, and the cam lever.





## **OPERATING THE MACHINE (cont'd)**

To change the belt, remove the two bolts on the beltguard.

Tension the belt until it has about a ¼" of deflection at the center.

The adjustment to raise and lower the motor are located at the front of the machine.



Remove red cap on either dust port to attach a vac system.

Connect the separator to the machine, and then connect the vac to the separator. The separator will remove most of the large debris, preventing premature filter failure.



To clean the filter, use a leaf blower (not an air hose) to clean the filter. Replace filter when it can no longer be cleaned, or becomes perforated.

