

# Surface Preparation Solutions

EXPERT SOLUTIONS • CUSTOMIZED SERVICE





## Need proper surface preparation?

Proper coating adhesion requires proper surface preparation. Proper surface preparation involves achieving the correct surface profile and removing any coatings or contaminants.

SMITH surface preparation solutions enable you to achieve the correct surface profile to maximize the performance of whatever is applied to the surface.

## Why choose SMITH?

Along with designing and building professional surface preparation tools for hard-working contractors, SMITH works with every customer to ensure they're getting the right solution for the job.

### Our proven process involves:

1. Listening to the customer's job requirements
2. Advising the customer on the most-proven products and processes to achieving the goals of the job
3. Providing the parts and equipment necessary to quickly support tight timelines
4. Solving the customer's ongoing jobs with application guidance to ensure best results
5. Supporting the customer for life with continuous product innovation to ensure maximum performance

## How can we help you?

Discover the benefits of partnering with a company who is committed to helping customers find the right solution to make the hard work of surface prep faster and easier.

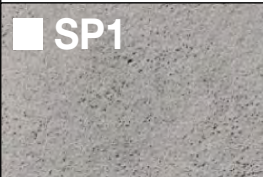
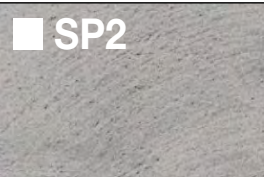

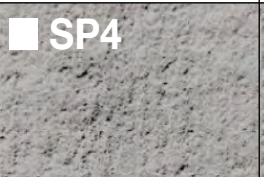






If you are not already a SMITH customer, ask your peers about their SMITH experience.



## Surface Preparation Selection Guides – How to use this guide:

The goal of this guide is to help you save time, money, and help you achieve the right surface profiles on your current or future jobs.

<b>What material are you removing?</b>	Asphalt	Dirt, Oil or Grease	Non-skids	Sealer or Cures
	Build-ups	Epoxy	Overlays	Surface-marks
	Coatings	Flaking paint	Preform tapes	Thermoplastic
	Cold-plastics	High-spots	Polyurea	Traffic paints
	Concrete	Mastics or Glues	Prep surfaces	
	Concrete forms	Mortar or Grouts	Raised sidewalks	
<b>What surface are you working on?</b>	Balconies or Decks	Dense-grade HMA	Sidewalks/Walkways	Steel surfaces
	Brick or Pavers	Ice	Slurry, chip, fog seals	Tined concrete
	Commercial floors	Open-grade HMA	Smooth concrete	Uneven surfaces
	Dairy barns	Roughen concrete	Stamped surface	Wood floors
<b>Age of surface?</b>	0 – 30 days	1 – 12 months	1 – 4 years	
<b>Surface condition?</b>	Smooth	Tined	Rough	
<b>Ambient conditions?</b>	Wet	Dry	Temperature:	
<b>Will toppings be applied?</b>	No	Yes	Type	
<b>Your removal depth?</b>	0 in - 1/8 in	1/8 in - 1/4 in	1/4 in - 1/2 in	over 1/2 in

DESIRED FINISHED PROFILE?				
SP1 Wire Brush, Acid Etch	SP2 Diamond Grind, PCD Flat	SP3 Fine Erase, Diamond Shave, Peen Strip, Light Blast	SP4 Medium Erase, Very Fine Strip/Scrape, Light/Med Blast	SP5 Coarse Erase, Fine Scarify, Medium Blast, Fine Strip/Scrape
				
SP6 Medium Scarify, Medium-Heavy Blast, Medium Strip/Scrape	SP7 Medium-Coarse Scarify, Heavy Blast, Coarse Strip/Scrape	SP8 Coarse Scarify, Coarse Scabble, Fine Plane	SP9 Very Coarse Scarify, Medium Plane	SP10 Coarse Plane
				

<b>Will dust need to be collected?</b>	No	Yes	Yes – HEPA	
<b>Walls or obstacles?</b>	No	Yes	Type	
<b>Your power needs?</b>	Air	Electric	Gas	Propane
<b>When does your job start?</b>	0 – 5 Days	6 – 29 Days	30 – 60 Days	
<b>When will your job end?</b>	0 – 5 Days	6 – 29 Days	30 – 60 Days	
<b>Daily production needs?</b>	0 – 99 sq ft	100 – 999 sq ft	1000 – 9,999 sq ft	
<b>Your labor experience?</b>	None	Novice: 0 – 1 yr	Apprentice: 1 – 4 yr	Expert: 5+ yrs
<b>Got equipment?</b>	No	Yes	Make/Model	
<b>Got cutters?</b>	No	Yes	Type/Qty.	



# SURFACE PREPARATION

Proper coating adhesion requires proper surface preparation. SMITH offers a full range of scarifiers and cutters to create the correct surface profile (SP) while leaving the surface looking untouched, guaranteeing good coating adhesion.

## Drum Style Cutters

	1	2	3	4	5	6	7	8	9	10
Wire Brush										
Steel Star										
Steel Beam										
Carbide Flail										
Carbide Flat										
Carbide-Tipped Miller										
Full-Carbide Miller										
Carbide Pick										
Diamond Blade										
QuikCut™ PCD Flat										
QuikCut PCD Fine										
QuikCut PCD Coarse										

## Rotary Style Cutters

	1	2	3	4	5	6	7	8	9	10
Wire Brush										
Carbide Pin 72										
Carbide Pin 48										
Carbide Pin 24										
Carbide Pick										

**Best Cutter Choice**  
 **Suitable Cutter Choice**

## Concrete

SP1	SP2	SP3	SP4	SP5	SP6	SP7	SP8	SP9	SP10

## Asphalt

SP1	SP2	SP3	SP4	SP5	SP6	SP7	SP8	SP9	SP10

Concrete										
Dirt/Debris Removal	Grease/Oil Removal	Curing Compound	Paint Removal	Epoxy/2K Paint Removal	Thermoplastic Removal	Tape Removal	Trip Hazard Removal	Surface Leveling	Anti-Slip Grooving	Inlay - Thermoplastic
Inlay - Tape										

Asphalt									
Dirt/Debris Removal	Grease/Oil Removal	Paint Removal	Epoxy/2K Paint Removal	Thermoplastic Removal	Tape Removal	Trip Hazard Removal	Surface Leveling	Anti-Slip Grooving	Inlay - Thermoplastic
Inlay - Tape									

Surface Profile									
SP1 (10-30 MILS)	SP2 (30-35 MILS)	SP3 (35-40 MILS)	SP4 (40-60 MILS)	SP5 (60-80 MILS)	SP6 (80-120 MILS)	SP7 (120-160 MILS)	SP8 (160-200 MILS)	SP9 (200-240 MILS)	SP10 (240-280 MILS)

1	2	3	4	5	6	7	8	9	10

1	2	3	4	5	6	7	8	9	10
F									
	F / M								
	F / M								
				F / M / C					
			F / M / C						
		F / M / C							
		F / M / C							
							F / M / C		
F / M									
	F								
		M							
			C						

1	2	3	4	5	6	7	8	9	10

1	2	3	4	5	6	7	8	9	10
F									
			F						
				M					
					C				

**F** FINE - 0 SPACERS  
**M** MEDIUM - 1 SPACER  
**C** COARSE - 2 SPACERS



# SMITH QUIKCUT™ PCD DIAMOND CUTTERS

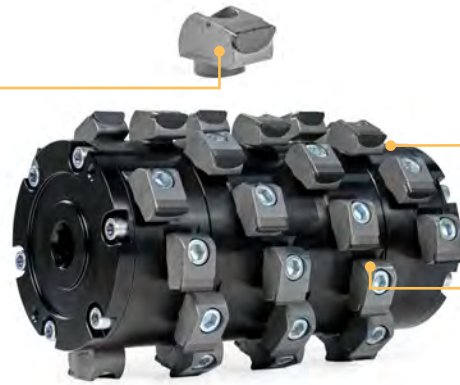
Smith's QuikCut PCD Diamond Cutters are revolutionizing surface preparation and coating removal applications by using self-sharpening polycrystalline diamond technology to gently shave the surface. These cutters feature a highly-densified PCD material optimized for high-impact applications; enabling them to last over 30X longer than traditional carbide flails. An efficient drum design enables them to cut up to 2X faster than competitive PCD drums while delivering an extremely consistent profile across the cut path.

## NEXT-LEVEL DURABILITY

- Highly-Densified PCD material optimized for greater durability in high-impact applications
- Lasts >30X longer than traditional carbide cutters
- Self-sharpening cutting edge maintains profile for the life of the cutter

## FASTER REMOVAL

- Efficient cutter layout accelerates removal rates without compromising cut quality
- Cuts up to 2X faster than competitive PCD drums
- Cuts 4X faster than traditional diamond blades



## LOWER REPLACEMENT COSTS

- Patent-pending design allows you to replace individual cutters — saving you time and money

## SUPERIOR PROFILE CONSISTENCY

- Engineered to deliver a consistent profile across the cut path
- Ideal for a full range of applications — including indoor flooring

## QUIKCUT PCD FLAT



## QUIKCUT PCD FINE



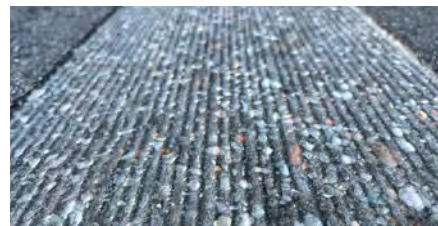
## QUIKCUT PCD COARSE



Creates flat profile that's ideal for traffic paint and thin coatings



Creates light profile that provides increased adhesion for durable traffic markings and floor coatings



Creates coarse profile that's ideal for thick coatings and aggressive removal



## FS200 / FS209 Series QuikCut PCD Diamond Drums

QUIKCUT PCD FLAT	QUIKCUT PCD FINE	QUIKCUT PCD COARSE	DESCRIPTION	CUT WIDTH	# CUTTERS
2001721	2001720	2003960	Drum Assembly, 8 in Cut	8 in	27
2003680	2003681	2004029	QuikCut PCD Diamond Cutter (Single)		
	2004425		Bare PCD Drum		



## SPS10 Series QuikCut PCD Diamond Drums

QUIKCUT PCD FLAT	QUIKCUT PCD FINE	QUIKCUT PCD COARSE	DESCRIPTION	CUT WIDTH	# CUTTERS
2001725	2001724	2003962	Drum Assembly, 10 in Cut	10 in	39
2001723	2001722	2003961	Drum Assembly, 5 in Cut	5 in	21
2003680	2003681	2004029	QuikCut PCD Diamond Cutter (Single)		
	2004426		Bare PCD Drum		



## FS351 Series QuikCut PCD Diamond Drums

QUIKCUT PCD FLAT	QUIKCUT PCD FINE	QUIKCUT PCD COARSE	DESCRIPTION	CUT WIDTH	# CUTTER
2001727	2001726	2003963	Drum Assembly, 15 in Cut	15 in	80
2003680	2003681	2004029	QuikCut PCD Diamond Cutter (Single)		
	2004427		Bare PCD Drum		

\*High-Speed Pulley Kit Required

# CUTTERS AND OEM REPLACEMENT PARTS

## Premium Diamond Blades



Professionals select SMITH premium diamond blades for grinding, grooving, recessing, and inlay applications, because they outperform other diamond blades. This is because SMITH only uses high-quality diamonds and a unique bonding system to ensure optimum cut speed and service life. Available in a range of finishes and sizes up to 20 inches for use in most walk-behind, self-propelled, and truck-mounted systems.

## Ultra-Premium Carbide Cutters

SMITH offers a variety of carbide cutters and OEM replacement parts for nearly any application. These cutters use only the highest-quality tungsten carbide, ensuring a long service life in demanding applications.

### Flail It™ Carbide Flails



Ideal for removing paint and epoxy markings, surface leveling, and removing trip hazards.

### Guarantee It™ 300 Carbide Flails



Similar to Flail It carbide flails. These carbide flails last up to 3X longer because they use a larger carbide pin.

### Mill It™ Carbide Millers



Millers scrape the surface to remove markings, making them the ideal choice for removing tape and thermoplastic.

### Scrape It™ Full Carbide Scrapers



Similar to Mill It carbide millers, but cast entirely from carbide to ensure a longer service life.

### Strip It™ 4N1 Carbide Flats



These versatile cutters use a flat carbide pin to strip, groove, mill, and clean concrete and asphalt surfaces.

### Chase It™ Carbide Routers



For fast cutting and long life, use Chase It carbide routers for your crack routing, joint cleaning, plunge-cut removal or grooving machines.



SMITH also offers a wide range of OEM replacement parts for walk-behind, self-propelled, and ride-on surface prep equipment. Please call your SMITH representative for more information.

- Carbide road planing bits
- Five segment diamond block assembly
- Scabbler bits
- Carbide cutter holder assemblies
- Drums, shafts, bushing, spacers, and more



## Plane It™ Carbide Picks

Plane It carbide picks are ideal for applications requiring aggressive removal of coatings or material. They are available for drum and rotary scarifiers.



## Finish It™ Tool Steel Cutters

SMITH offers a wide variety of cutters manufactured from high-quality tool steel. These cutters are heat-treated for a longer life.

- Beam: gentle removal
- Stars: deeper substrate penetration
- Saw-Tooth: for aggressive removal



BEAM



STARS



SAW-TOOTH

## Cure It™ Wire Brushes



Wire brushes are ideal for removing curing compounds and cleaning surfaces without damaging the substrate. SMITH offers a variety of brushes for SMITH and OEM equipment.

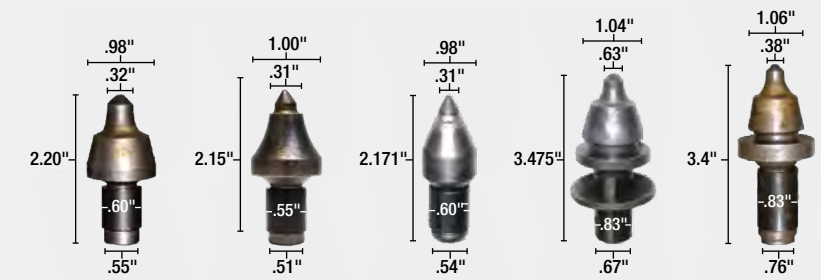
## Erase It™ Rotary Cutters



Ideal for removing paint, epoxy, thermoplastic, and tape, SMITH offers a variety of carbide and steel cutters for SMITH and OEM rotary scarifiers. Unlike drum-style scarifiers that can damage or leave grooves on the surface if used incorrectly, rotary scarifiers hover on the surface while chipping and scraping the marking below. This results in groove-free removal without damaging the surface.

# POPULAR CUTTERS

SMITH offers a full range of cutters and OEM replacement parts for scarifying equipment. List below is a sampling of our most popular cutters. Please contact us if your solution is not listed below.



MB83NB	MB28.NS	MB89.NS	MB69	MB68L
Blunt tip	Sharp tip	Sharp tip	Blunt tip	Blunt tip

DESCRIPTIONS	PART NUMBER	O.D. in.	I.D. in.	WIDTH in.
<b>Components available for building custom-width drums</b>				
<b>Diamond Blades</b>				
<b>7 inch</b>	W.DB.7.25	7		0.25
	W.DB.7.125	7		0.125
<b>10 inch</b>	W.DB.S.10.25.15	10		0.25
	W.DB.S.10.3MM.15	10		3mm
<b>Additional offerings available in 7, 10, 12, 14, 18, and 20 inch O.D. for asphalt and concrete</b>				
<b>Flail It Carbide Flails</b>				
<b>8 Spike Flail</b>	CF2118	2.29	1.02	0.25
	CF2128	2.38	0.79	0.24
	CF2618	2.30	0.68	0.25
	CF3158.1	3.26	1.18	0.32
	CF3159	3.15	1.03	0.32
<b>12 Spike Flail</b>	CF3150.1	3.15	1.03	0.32
	CF3151.1	3.15	1.18	0.32
<b>8 Spike Round Flail</b>	CF1519	1.40	0.47	0.24
<b>5 and 6 Spike Flail</b>	CF2514	1.68	0.63	0.24
	CF2516	1.85	0.61	0.25
	CF2616	2.24	0.68	0.25
<b>Guarantee It 300 Carbide Flails</b>				
<b>12 Flail Pins</b>	CF3001	3.26	1.06	0.43
	CF3002	3.26	1.38	0.43

DESCRIPTIONS	PART NUMBER	O.D. in.	I.D. in.	WIDTH in.
<b>Strip It 4N1 Carbide Flats</b>				
<b>6 Teeth</b>	CF2526	1.85	0.61	0.24
<b>8 Teeth</b>	CF2228	2.38	0.79	0.24
<b>16 Teeth</b>	CF4116	3.23	1.04	0.32
<b>Mill It Carbide Edge Millers</b>				
<b>5 or 6 Edge</b>	CM2535	1.66	0.60	0.85
	CM2150	2.23	0.68	0.87
	CM2151	2.23	0.79	0.87
	CM3136	3.20	1.03	0.87
	CM3137	3.20	1.18	0.87
	CM3146	3.25	1.03	1.54
<b>Scrape It Full-Carbide Scrapers</b>				
<b>Scraper Squares</b>	CP2400	0.75	0.26	0.26
	CP2402.8N	1.00	0.38	0.19
	CP2403	1.00	0.38	0.32
<b>7 Edge Scraper</b>	CM2520	1.68	0.54	0.47
<b>12 Edge Scraper</b>	CM2550	2.22	0.87	0.79
<b>15 Sided Stars</b>	CF0411	1.20	0.45	0.21
	CF0412	1.20	0.45	0.25
<b>23 Sided Star</b>	CF0413	1.55	0.57	0.24
<b>12 Sided, Blunt</b>	CF0415	1.67	0.61	0.16

DESCRIPTIONS	PART NUMBER	O.D. in.	I.D. in.	WIDTH in.
<b>Finish It Tool-Steel Cutters</b>				
<b>Beam (Blunt)</b>	HS1013	1.65	0.64	0.125
	HS1000	2.00	0.59	0.156
	HS1001	2.00	0.78	0.160
	HS2024	2.38	0.80	0.160
	HS2025	2.38	1.03	0.160
	HS3001.1	3.02	1.03	0.197
	HS3030	3.02	1.18	0.197
<b>Star (Sharp)</b>	HS1053	1.65	0.53	0.125
	HS1003	1.65	0.64	0.130
	HS1004	2.00	0.57	0.160
	HS1008	2.00	0.79	0.156
	HS3002	3.00	1.03	0.197
<b>Saw-Tooth (Sharp)</b>	HS0010	1.00	0.44	0.125
	HS0011	1.48	0.64	0.125
	HS0012.1	1.24	0.63	0.125
<b>Chase It Carbide Edge Routers</b>				
<b>With Hub (0.867")</b>	RP0158	3.63	1.04	0.358
	SS0158	4.84	1.00	0.372
<b>No Hub</b>	RP0058	3.63	1.04	0.358
	SS0058	4.84	1.01	0.375

WIRE BRUSH ASSEMBLY FOR	PART NUMBER
<b>Cure It Wire Brushes</b>	
SPS10	107500A
FS200, FR200, RT200, etc.	920.3010A
SPS8, CPM8	65059NA
MRL Grinders	MR-7512A
FS351, Stripe Eater	SW-7510A
Set of 6 cup discs for X3 & LNX8	X3.00.101.00A

PART NUMBER	NUMBER OF PINS	NUMBER OF BEARINGS	FINISH	OEM FOR
<b>Erase It Rotary Bit Carbide Cutters</b>				
ED3000NA	72	2	SP6	TLR7
ED3001NA	144	2	SP5	TLR7
ED3002NA	216	2	SP4	TLR7
PM3000NA	72	3	SP6	PMEraser, SMITH X-series
PM3001NA	144	3	SP5	PMEraser, SMITH X-series
PM3002NA	216	3	SP4	PMEraser, SMITH X-series
<b>Erase It Rotary Steel Pin Cutters</b>				
LX3518NA	54	1	SP6	PMEraser, Linax

SMITH Surface Preparation Systems

Phone: 1-954-941-9744  
Toll-free: 800-653-9311  
<http://smithmfg.com/>



## Handhelds

# FS050

The FS050 is a rugged and lightweight handheld scarifier designed for edging and removal in hard-to-reach places. It has a cut width of up to 2 inches and operates on 110v power.

### Jobsite Tough Design

- Steel and high-impact plastic construction
- Sealed bearings for extended life

### Left and Right Hand Operation

- Reversible handle for left and right-handed users



### Power

- 110v

### Dust Ports

- Easily connects to MV-series vacuums for collecting airborne silica dust

# FS150

The FS150 is a rugged and lightweight handheld rotary eraser ideal for cleaning, texturing, descaling, and scabbling surfaces. It provides a removal path of up to 7 inches using a variety of cutters to get the finish you require.

### Jobsite Tough Design

- Steel and high-impact plastic construction
- Sealed bearings for extended life

### Wide Removal Path

- Rotary action removes 7 in wide path

### Power

- 110v

### Dust Ports

- Easily connects to MV-series vacuums for collecting airborne silica dust



## Drum Scarifiers

# FS200 and FS209



The FS200 and FS209 drum scarifiers are ideal for quick surface preparation on concrete, asphalt, and steel. Both can cut a path up to 8 inches wide. The FS200 is available in gasoline (5.5HP Honda®) and electric-powered versions. The FS209 takes the portability and flexibility of the FS200 and adds more power via 9HP Honda gasoline engine.



### Get The Right Cut

- Depth control lever and knob for fine-tuning your cut
- Wide variety of compatible cutters

### Jobsite Tough Design

- All-steel construction
- Maintenance-free bearings
- Removable side plate for easy drum removal

### Reduced Vibration

- Anti-vibration foam grips

### Power Options

- 5.5 HP and 9 HP (FS209) Honda gasoline engine
- 2 HP, 120v, 1ph
- 3 HP, 220v, 1ph

### Dust Ports

- Easily connects to MV-series vacuums for collecting airborne silica dust

### Accessories

- Edger kit
- Water kit



FS200  
Electric  
Shown



FS209  
shown

# SPS8

The SPS8 is a compact scarifier ideal for small surface preparation jobs on concrete or asphalt. This all-purpose scarifier has a maximum cut width of 8 inches and can be used with a large assortment of cutters to remove markings, level uneven surfaces, and prepare surfaces for new markings.



### Get The Right Cut

- Depth control dial with 0.01 in adjustments for precise control of cut depth

### Jobsite Tough Design

- Heavy-duty steel frame
- Sealed bearings
- Shock absorber to protect drum against damage
- Heavy-duty bushed drums

### Reduced Vibration

- Foam grips for reduced vibration

### Power Options

- 9 HP Honda
- 5 HP, 230v, 1ph

### Dust Ports

- Easily connects to MV-series vacuums for collecting airborne silica dust





## Drum Scarifiers

# SPS10



The SPS10 is a high-output drum-style scarifier ideal for surface preparation on a wide variety of surfaces including asphalt, concrete, and steel. This all-purpose scarifier has a maximum cut width of 10 inches and can be paired with a wide assortment of cutters and accessories to remove markings, level uneven surfaces, and groove for inlay.

### Get The Right Cut

- Depth control dial with 0.01 in adjustments for precise control of cut depth
- Efficient “No Bounce” center-weight design

### Jobsite Tough Design

- Heavy-duty steel frame
- Sealed bearings
- Shock absorber to protect drum against damage
- Heavy-duty bushed drums

### Comfort and Ease of Use

- Adjustable handlebar
- Foam grips for reduced vibration
- Removable side plate makes changing drums easy



### Gas and Electric-Powered Options

- 13 HP Honda
- 7.5 HP, 230v, 1ph
- 7.5 HP, 230v, 3ph

### Dust Ports

- Easily connects to MV-series vacuums for collecting airborne silica dust

### Accessories

- Water kit
- Edger kit
- Hitch kit



SPS10  
Electric  
shown

# SPS10 DCS

The days of manually adjusting cutter depth are over. The SPS10 DCS takes the proven capability and flexibility of the popular SPS10 and adds SMITH's revolutionary electronic DCS Depth Control System that raises and lowers your cutter with the push of a button.

### Eliminate Measuring and Guesswork

- Adjust cut depth in 0.01 in increments
- Set “zero point” where cutter meets the surface
- Displays active depth from zero point in English or metric units

### Total Operator Control

- Easy adjustment via control panel and handlebar controls
- Quickly adjust to uneven surfaces
- Achieve consistent cut depth for inlay
- Eliminate damage

### Durable and Maintenance-Free Design

- Aluminum control enclosure holds up to harsh job site environments
- All electronic components are 100% encapsulated to protect against vibration and weather
- Linear actuator enclosed in sealed case to resist water, dust, and debris



## Drum Scarifiers

# FS351 DCS

The FS351 DCS is a heavy-duty, self-propelled drum scarifier designed to tackle the most demanding jobs. It has a maximum cut width of 15 inches and features SMITH's electronic DCS Depth Control System, which allows users to precisely adjust the cut depth without stopping production. The FS351 DCS is available in gas, electric, and propane-powered versions.



### Do-it-All Solution

- Adaptable for leveling, grooving, scarifying, and removing coatings
- Up to 15 in cut path
- Wide variety of cutters available
- Quick-change side plate for easier drum removal

### Self-Propelled

- Variable-Speed, Hydraulic Drive allows user to dial in the speed for each application

### Designed for the Toughest Jobs

- All-Steel Chassis
- Low-vibration
- Long bearing life

### Dust Ports

- Easily connects to MV-series vacuums for collecting airborne silica dust

### Power Options

- 38 HP EFI Kohler® Gasoline
- 25 HP EFI Kohler Propane
- 20 HP, 380/480v, 3ph

### Accessories

- Outboard levelling wheels
- Water kit
- Transport wheel kit



### Eliminate Measuring and Guesswork

- Adjust cut depth in 0.01 in increments
- Set "zero point" where cutter meets the surface
- Displays active depth from zero point in English or metric units

### Total Operator Control

- Easy adjustment via control panel and handlebar controls
- Quickly adjust to uneven surfaces
- Achieve consistent cut depth for inlay
- Eliminate damage due to "dropped drums"

### Durable and Maintenance-Free Design

- Aluminum control enclosure holds up to harsh job site environments
- All electronic components are 100% encapsulated to protect against vibration and weather
- Linear actuator enclosed in sealed case to resist water, dust, and debris





## Rotary Erasers

# LNx8



The LNx8 is the ideal choice for when you need to remove lines without the grooving pattern or ghostlines typically associated with drum-style scarifiers. The rotary action of this scarifier hovers over the surface, breaking the coating while simultaneously scraping across it, leaving a smooth beveled edge without grooves or undulations.

### No Groove Eraser

- Rotary cut removes lines without leaving grooves
- 8 in cut width

### “No Damage” Control

- Depth control dial with 0.01 in adjustments for precise control of cut depth
- Control cutter pitch
- Pressure control system with spring allows it to float on surface for nice beveled finish

### Tilt-Up Chassis

- Toolless design for quick and easy replacement of cutters

### Jobsite Tough Design

- All steel frame
- Maintenance-free bearings

### 13 HP Honda Engine with Electric Start

- All steel frame

### Dust Ports

- Easily connects to MV-series vacuums for collecting airborne silica dust

### Accessories

- Hitch kit



# LNx8 DCS

The days of manually adjusting cutter depth are over. The LNx8 DCS takes the proven capability and flexibility of the popular LNx8 and adds SMITH's revolutionary electronic DCS Depth Control System that raises and lowers your cutter with the push of a button.

### Eliminate Measuring and Guesswork

- Adjust cut depth in 0.01 in increments
- Set “zero point” where cutter meets the surface
- Displays active depth from zero point in English or metric units

### Total Operator Control

- Easy adjustment via control panel and handlebar controls
- Quickly adjust to uneven surfaces
- Eliminate damage due to “dropped spindles”

### Durable and Maintenance-Free Design

- Aluminum control enclosure holds up to harsh job site environments
- All electronic components are 100% encapsulated to protect against vibration and weather
- Linear actuator enclosed in sealed case to resist water, dust, and debris



## Rotary Erasers

# X1



The X1 No Groove Eraser is a high production rotary eraser that attaches to low-flow hydraulic loaders for increased performance over the LNX8.

### No Groove Eraser

- Rotary cut removes lines without leaving grooves
- 8 in cut width

### “No Damage” Control

- Spring suspension allows cutters to “float” on the surface
- Multi-point depth adjustment for accurate depth control

### Hydraulic Power

- 20 HP Low-Flow Hydraulic

### Bob-Tach® Quick-Attach Backplate

- Quick, tool-free connection to most skid loader equipment

### Dust Ports

- Easily connects to MV-series vacuums for collecting airborne silica dust



# X3

The X3 is the highest production rotary eraser that SMITH offers. This skid steer mounted machine uses three cutter assemblies to remove up to 16 inches every pass. It is offered in gas and hydraulically powered versions.

### No Groove Eraser

- Rotary cut removes lines without leaving grooves
- Three cutter assemblies provide 16 in cut width

### “No Damage” Control

- Spring suspension allows cutters to “float” on the surface
- Multi-point depth adjustment for accurate depth control

### Power Options

- 40 HP High-Flow Hydraulic
- 25 HP Kohler Gasoline

### Bob-Tach Quick-Attach Backplate

- Quick, tool-free connection to most skid loader equipment

### Dust Ports

- Easily connects to MV-series vacuums for collecting airborne silica dust



40 HP High-Flow Hydraulic Model



25 HP Kohler Gasoline Model





## Ride-On Equipment

# SR-25 Sulky Driver



Why walk when you can ride? SMITH's SR-25 Sulky Driver connects to your walk-behind equipment, enabling you to increase your productivity.

### No Pushing Between Jobs

- Dual Foot Pedal System with forward and reverse

### Contractor-Preferred Power

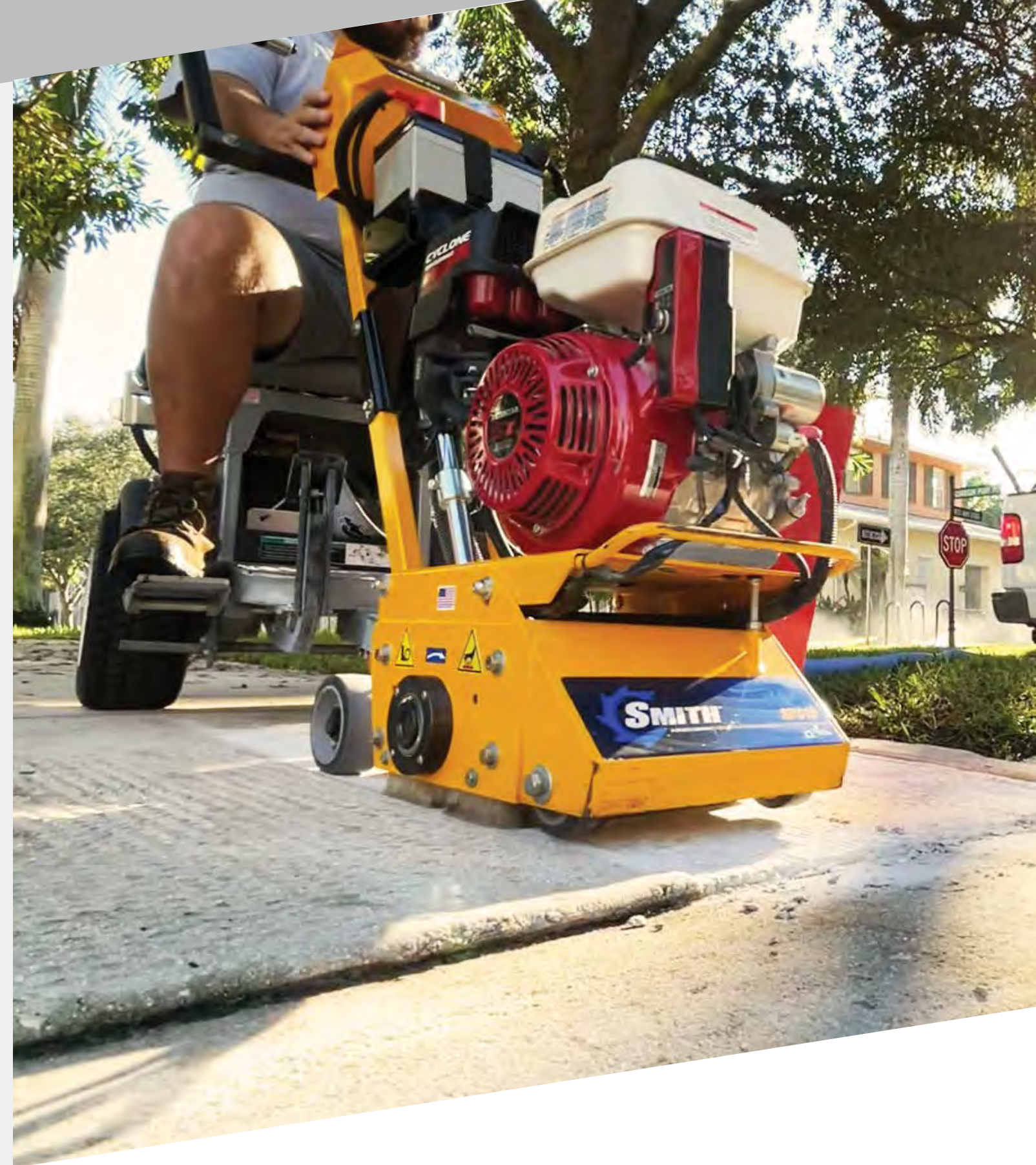
- Honda gasoline engine

### Easier Starting

- ProStart™ requires up to 50% less pulling effort to start the engine and outperforms other starting systems in cooler weather

### After-Dark Lighting

- Adjustable lighting system allows you to keep working in low-light conditions while protect
- Break-A-Way design protects against costly repairs





## Dust Collection

# Vacuum Systems

When used in conjunction with SMITH scarifiers, SMITH's MV-series of heavy-duty Vacuum Systems help reduce airborne silica dust levels to meet OSHA's safety requirements. All MV dust collectors feature rugged, all-steel construction to handle heavy-duty concrete and asphalt grinding applications. Available in electric (MV360 and MV1000) and gasoline-powered models (MV5500).

### Safer Jobsites

- OSHA-compliant filters remove harmful silica dust, resulting in a safer environment

### Reduced Filter Clogging

- Knockdown paddles remove debris that can clog filters

### Easy Filter Changes

- Toolless filter design enables users to quickly replace filters

### Longer Run Time

- High-capacity Longopac® bags extend run time (MV1000 and MV5500 only)

### Power Options

- 2 HP, 110v, 1ph (MV360)
- 3 HP, 220v, 1ph (MV1000)
- 13 HP Honda Gasoline (MV5500)



MV360



MV1000



MV5500



MV-SC

# MV-SC Cyclone Separator

SMITH's MV-SC cyclone separator collects large debris before it reaches your vacuum, greatly extending the time between filter changes.

### Fewer Filter Changes

- Removes large debris before it gets to the vacuum filter, reducing filter clogs and enabling you to work longer

### Longer Run Time

- Longopac® high-capacity bag enables you to run longer

### Jobsite Tough Design

- Heavy-duty steel construction stands up to harsh jobsite environments



# PRODUCT SPECIFICATIONS

SERIES	HANDHELD	DRUM SCARIFIERS		
--------	----------	-----------------	--	--



UNIT MODEL	FS050	FS150	FS200	FS209
<b>Weight lb (kg)</b>	12 (5.5)	15 (6.8)	150 (68)	160 (73)
<b>Cutter Type</b>	Drum	Rotary	Drum	Drum
<b>Max Removal Width</b>	2 in.	7 in.	8 in.	8 in.
<b>Drum Diameter</b>	4 in.	N/A	5 in.	5 in.
<b>Power Options/HP</b>	110v	110v	5.5 HP Honda Gas 2 HP, 110v, 1ph 3 HP, 220v, 1ph	9 HP Honda Gas
<b>Gas Engine Start</b>	N/A	N/A	Pull	Pull
<b>Vacuum Ports</b>	1	1	1	1
<b>Driver Compatible</b>	NO	NO	NO	NO
<b>Max Removal Rate</b>	100 sq ft/hr	100 sq ft/hr	300 sq ft/hr	400 sq ft/hr
<b>Wet Controls</b>	N/A	N/A	Optional	Optional
<b>Tach/Hour Meter</b>	N/A	N/A	Optional	Optional
<b>Ball Hitch</b>	N/A	N/A	N/A	N/A
<b>Line Pointer</b>	N/A	N/A	N/A	N/A
<b>Edger</b>	N/A	N/A	Optional	Optional

Compatible Cutter Assemblies				
Cure It Wire Brush			■	■
Finish It Steel Star	■	■	■	■
Finish It Steel Beam			■	■
Remove It Carbide Star	■	■		
Flail It Carbide Flail	■	■	■	■
Strip It 4N1 Carbide Flat	■		■	■
Mill It Carbide Miller			■	■
Scrape It Full-Carbide Miller			■	■
Plane It Carbide Pick				
Diamond Blade				
QuikCut PCD Diamond Cutters			■	■

DRUM SCARIFIERS			
-----------------	--	--	--



SPS8	SPS10	SPS10 DCS	FS351 DCS
225 (102)	230 (104)	260 (118)	750 (340)
Drum	Drum	Drum	Drum
8 in.	10 in.	10 in.	15 in.
7 in.	7 in.	7 in.	10 in.
9 HP Honda Gas	13 HP Honda Gas	13 HP Honda Gas	38 HP Kohler EFI Gas
5 HP, 230v, 1ph	7.5 HP, 230v, 1ph		25 HP Kohler EFI Propane
	7.5 HP, 230v, 3ph		20 HP, 380/480v, 3ph
Pull	Pull	Electric	Electric
2	2	2	2
YES	YES	YES	NO
400 sq ft/hr	700 sq ft/hr	700 sq ft/hr	3500 sq ft/hr
Optional	Optional	Optional	Optional
Optional	Optional	Standard	Standard
Optional	Optional	Optional	N/A
Optional	Optional	Optional	N/A
Optional	Optional	Optional	N/A

■	■	■	■
■	■	■	■
■	■	■	■
■	■	■	■
■	■	■	■
■	■	■	■
■	■	■	■
■	■	■	■
■	■	■	■
■	■	■	■
■	■	■	■
■	■	■	■

# PRODUCT SPECIFICATIONS

## SERIES ROTARY SCARIFIERS



UNIT MODEL	LNX8	LNX8 DCS	X1	X3
<b>Weight lb (kg)</b>	450 (204)	460 (209)	480 (218)	956 (434)
<b>Cutter Type</b>	Rotary	Rotary	Rotary	Rotary
<b>Max Removal Width</b>	8 in.	8 in.	8 in.	16 in.
<b>Drum Diameter</b>	N/A	N/A	N/A	N/A
<b>Power Options/HP</b>	13 HP Honda Gas	13 HP Honda Gas	20 HP Hydraulic	40 HP Hydraulic 25 HP Kohler Gas
<b>Gas Engine Start</b>	Electric	Electric	N/A	Electric
<b>Vacuum Ports</b>	1	1	2	2
<b>Driver Compatible</b>	YES	YES	Bob-Tach Skid Loader Connection	Bob-Tach Skid Loader Connection
<b>Max Removal Rate</b>	800 sq ft/hr	800 sq ft/hr	1000 sq ft/hr	2400 sq ft/hr
<b>Wet Controls</b>	N/A	N/A	N/A	N/A
<b>Tach/Hour Meter</b>	Optional	Standard	Standard	Standard
<b>Ball Hitch</b>	Optional	Optional	N/A	N/A
<b>Line Pointer</b>	N/A	N/A	N/A	N/A
<b>Edger</b>	N/A	N/A	N/A	N/A

Compatible Rotary Cutters				
<b>Cure It Wire Brush</b>	■	■	■	■
<b>Erase It Carbide Pin 24</b>	■	■	■	■
<b>Erase It Carbide Pin 48</b>	■	■	■	■
<b>Erase It Carbide Pin 72</b>	■	■	■	■
<b>Plane It Carbide Pick</b>	■	■	■	■

## DRIVER



UNIT MODEL	SR-25 SULKY
<b>Operating Speed</b> Forward MPH (KM/H) Reverse MPH (KM/H)	Up to 10 (16) Up to 6 (10)
<b>Engine size</b> CC (HP)	Honda 200 (6.5)
<b>weight - lb (kg)</b>	275 (125)
<b>Fuel Capacity</b> gal (ltrs)	.95 (3.6)
<b>Engine Start</b>	ProStart

## CYCLONE SEPARATOR



UNIT MODEL	MV-SC
<b>Collection</b>	Bag Collection

## VACUUMS



UNIT MODEL	MV360	MV1000	MV5500
<b>Power</b>	2 HP, 110v, 1ph	3 HP, 230v, 1ph	13 HP Honda Gas
<b>Airflow (CFM)</b>	260	375	300
<b>Vacuum Pressure</b>	90" Water	100" Water	150" Water
<b>Weight - lb (kg)</b>	128 (58)	175 (80)	375 (170)
<b>Available Filters</b>	OSHA	OSHA	OSHA & HEPA
<b>Capacity</b>	20 gal drum	Bag Collection	Bag Collection





## SMITH Surface Preparation Systems

Phone: 1-954-941-9744

Toll-free: 800-653-9311

[smithmfg.com](http://smithmfg.com)